

TAB



SMALL TRACTION AND LEISURE BATTERIES

TAB batteries

The TAB Motion range offers high-performance small traction and leisure batteries designed to meet the demands of various applications, including mobility, industrial use, recreational activities, and solar power solutions. TAB Motion batteries provide exceptional durability, efficiency, and reliability, even in extreme working conditions.

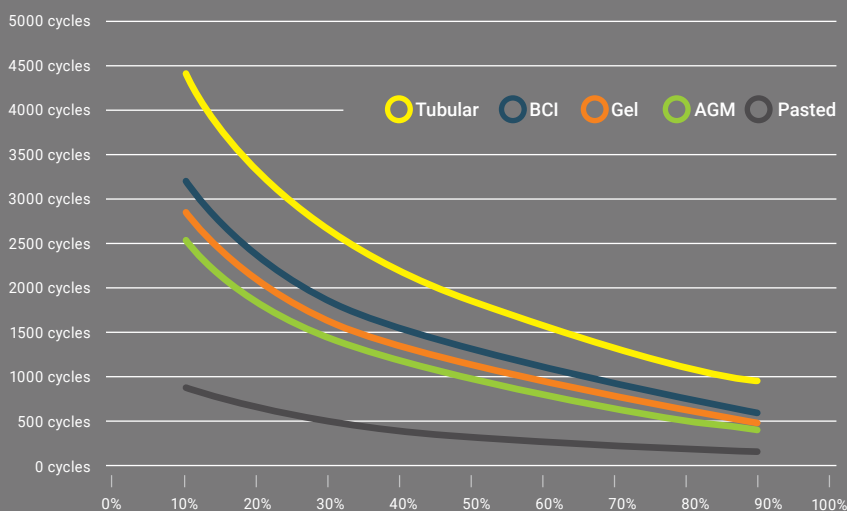
ADVANCED CHOICE

For optimal battery life, it is essential to avoid deep discharges and never leave the battery in a discharged state. Flooded batteries require periodic electrolyte level checks and refilling with demineralized water. Some models also support an automatic single-point watering system for added convenience. In contrast, valve-regulated AGM and Gel batteries are fully sealed and require no maintenance.

Regardless of the conditions, TAB Motion batteries deliver the power, reliability, and endurance you need to keep moving forward.

DoD - Number of Cycles

DEPTH OF DISCHARGE (%)





SUSTAINABLE POWER
FOR EVERY APPLICATION



completed EcoMotion cycle of a battery lasting for life



99% of the lead-acid batteries can be recycled



Lead can be recycled endlessly

COMMITMENT TO SUSTAINABILITY, SAFETY, AND ENVIRONMENTAL PROTECTION

For decades, TAB has remained dedicated to ensuring optimum safety, sustainability, and health while prioritizing environmental protection. The Company follows strict guidelines that are continuously updated to reflect the latest advancements, providing comprehensive protection for employees, neighbours, customers, consumers, and the environment.

TAB prioritizes sustainable development and recognizes its long-term responsibility to promote environmentally friendly practices. This commitment is rooted in a systematic approach to monitoring and minimizing environmental impact. TAB adheres to the ISO 14001 Standard, incorporates Best Available Techniques (BAT) guidelines into its environmental policy, and actively participates in various established environmental programs.

EcoMotion

TAB is committed to more than just manufacturing high-quality lead-acid batteries. Through its EcoMotion system, TAB ensures the environmentally responsible collection and recycling of used batteries.

EcoMotion embodies a closed-loop LiveCycle, encompassing every stage from battery production to recycling. TAB produces new batteries and, via its authorized sales and distribution network, collects used batteries for professional recycling at its subsidiary, MPI-Reciklaža.

This comprehensive approach reflects TAB's dedication to sustainability and environmental responsibility.



TAB Motion Pasted

POWER YOU CAN RELY ON.

Designed for durability and performance, the TAB Motion Pasted is a high-quality flooded small traction battery built to withstand demanding conditions. With pasted positive plates (expanded or gravity casted), it ensures reliability and efficiency for a wide range of applications.

Main Features:

- **Exceptional Vibration Resistance.**
Built to endure tough conditions.
- **High Discharge Capability.**
Delivers power when you need it most.
- **Reliable Performance.**
Ideal for demanding environments.
- **Economical & Long-Lasting.**
A cost-effective power solution.

Charging:

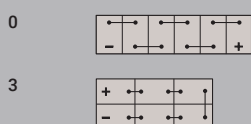
- The charging profile is Wa; WoWa, IUla; WUla
- Charging voltages are given at temperature 25°C, otherwise temperature compensation 5mV/°C/cell



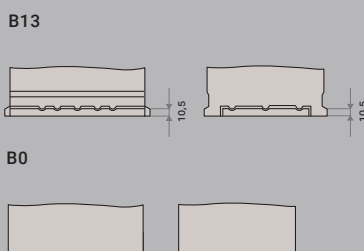
TAB Motion Pasted

TAB ID	Short Code	C100 (Ah)	C20 (Ah)	C5 (Ah)	Box Type	Voltage (V)	LxWxH (mm)	BHD	Layout	Terminal	PCS/Pallet (EUR/CNT)	Weight (kg)
1000782	50 P	70	60	50	L2	12	242x175x190	B13	0	1	63/90	16.6
1000783	60 P	80	75	60	L3	12	278x175x190	B13	0	1	51/80	19.2
1000784	85 P	115	105	85	L5	12	353x175x190	B13	0	1	36/60	24.6
1000769	80 P	115	105	80	59518	12	312x175x212	B0	0	1	42/70	22.3
1000761	105 P	125	120	105	60528	12	344x172x212/234	B0	0	1	36/48	27.8
1000766	110 P	155	140	110	62512	12	344x172x262/284	B0	0	1	24/36	31.8
1000763	110 P MAC	150	140	110	MAC 110	12	509x175x182/202	B0	3	1	24/40	33.5
1000764	150 P	190	180	150	B	12	512x223x194/216	B0	3	1	21/35	43.0
1000765	190 P	245	225	190	C	12	518x273x214/235	B0	3	1	18/24	56.1

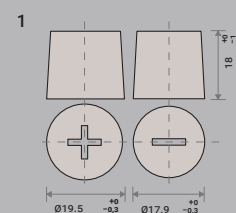
LAYOUT



BHD



TERMINALS



APPLICATIONS



Built for Performance. Engineered for Endurance.

TAB Motion Pasted

Number of cycles: 300 (IEC / EN 60254-1)



TAB Motion BCI

POWERFUL & DURABLE
DEEP-CYCLE BATTERIES.

Designed to withstand extreme working conditions while providing long-lasting performance and durability. Built with premium pasted plate construction, they ensure high-rate discharge capability and reliable power for demanding applications. Engineered for easy handling, installation, and maintenance, they are the perfect choice for heavy-duty use.

Main Features:

- **Premium Pasted Plate Construction.**
Ensures durability and longevity.
- **High-Rate Discharge Capability.**
Delivers strong and steady power.
- **Reliable & Long-Lasting.**
Built to perform in tough environments.
- **Possible installation of Aquamatic System.**
All battery covers feature a bayonet opening, allowing for quick and secure installation of the BFS Plug III system for easier maintenance.

Charging:

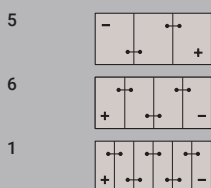
- The charging profile is IU1a
- Bulk charge: 2,45-2,50 V/cell
- Boost charge: 2,65-2,75 V/cell
- Float charge: 2,20-2,30 V/Cell
- Voltages apply to room temperature at 25°C.
When the temperature is different, a voltage compensation of 5mV/°C /cell must be taken into account
- Charging voltages are given at temperature 25°C, otherwise temperature compensation 5mV/°C/cell



TAB Motion BCI

TAB ID	Short Code	C100 (Ah)	C20 (Ah)	C5 (Ah)	Box Type	Voltage (V)	LxWxH (mm)	BHD	Layout	Terminal	PCS/Pallet (EUR/CNT)	Weight (kg)
1026410	B 225	250	225	185	GC2	6	264x183x245/268	B0	5	DT	36/54	28.7
1030450	B 240	265	240	195	GC2	6	264x183x245/268	B0	5	DT	36/54	29.7
1026445	B 330	367	330	271	902	6	311x181x336/361	B0	5	DT	24/36	42.8
1026447	B 420	467	420	344	903	6	311x181x386/411	B0	5	DT	24/36	51.0
1026448	B 170	189	170	145	GC8	8	264x183x245/268	B0	6	DT	36/54	29.3
1026449	B 150	167	150	120	GC12	12	332x183x248/277	B0	1	ELPT	24/36	37.0

LAYOUT



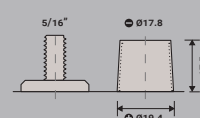
BHD

B0

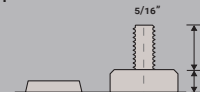


TERMINALS

DT



ELPT



APPLICATIONS



Power you can Trust in every Cycle.

TAB Motion BCI

Number of cycles: 1200 Cycles at 50% DoD



TAB Motion Tubular

ENDURANCE. POWER.
PERFORMANCE.

Designed for applications that demand frequent charge and discharge cycles, this flooded small traction battery features advanced tubular positive plates, ensuring exceptional durability and high resistance to deep discharges. Even in the toughest conditions, it provides consistent power and a longer lifespan.

Main Features:

- **Premium Tubular Plate Construction.**
Ensures a long operating life.
- **High Discharge Capability.**
Power when you need it most.
- **Built for Tough Conditions.**
Performs reliably in demanding environments.
- **Superior Durability.**
Up to 1200 cycles for extended performance.

Charging:

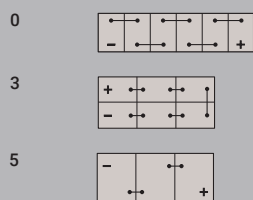
- The charging profile is Wa; WoWa, IUla; WUla
- Charging voltages are given at temperature 25°C, otherwise temperature compensation 5mV/°C/cell



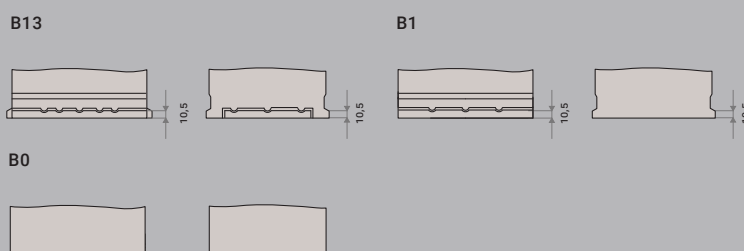
TAB Motion Tubular

TAB ID	Short Code	C100 (Ah)	C20 (Ah)	C5 (Ah)	Box Type	Voltage (V)	L×W×H (mm)	BHD	Layout	Terminal	PCS/Pallet (EUR/CNT)	Weight (kg)
1000253	55 T	65	60	55	L3	12	278×175×190	B13	0	1	51/80	18.9
1000399	90 T	115	110	90	59518	12	303×175×208/229	B1	0	1	42/70	28.7
1000016	95 T	130	115	95	60528	12	344×172×212/234	B0	0	1	36/48	30.0
1000014	120 T	155	140	120	62512	12	344×172×262/284	B0	0	1	24/36	37.5
1000251	145 T	180	165	145	B	12	512×223×194/216	B0	3	1	21/35	48.5
1000417	Golf Cart T	240	220	180	Golf Cart	6	244×190×273/284	B0	5	1	36/48	29.5
1003148	Golf Cart TS	270	250	210	Golf Cart	6	244×190×273/284	B0	5	1	36/54	32.7

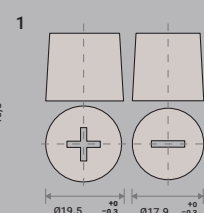
LAYOUT



BHD



TERMINALS



APPLICATIONS



Reliable Power – Cycle After Cycle.

TAB Motion Tubular
Number of cycles: 1200 (IEC / EN 60254-1)



TAB Motion AGM

RELIABLE, MAINTENANCE-FREE POWER.

The TAB Motion AGM is a high-performance VRLA (Valve Regulated Lead Acid) battery, designed with Absorption Glass Mat (AGM) technology for superior efficiency and durability. With positive pasted plates (gravity casted) and an innovative sealed design, it offers higher energy density, no maintenance, and excellent vibration resistance—perfect for demanding applications.

Main Features:

- **30% Higher Energy Density and Ultra-Low Self-Discharge.**
More power in a compact design.
Longer shelf life and reliability.
- **Zero Corrosive Exhaust.**
Safe for food & pharmaceutical industries.
- **Rugged & Vibration Resistant. Leak-Proof.**
Built for tough environments.
No spills, even if the housing is damaged.
- **Energy-Efficient Charging.**
Lower power consumption with a 1.08 charging factor.
- **100% Maintenance-Free.**
Install and forget.
- **High Starting Performance.**
Instant, reliable power when you need it most.



Charging:

- IU charging characteristic: $U_{ch} = 14,4 - 14,8 \text{ V}$, $I_{ch \text{ max}} = 0,25 \times C20$
- IUJa charging characteristic with equalizing charge step 2:
1) $U_{ch} = 14,4 - 14,8 \text{ V}$; $I_{ch \text{ max}} = 0,25 \times C20$
2) $I_a = 0,01 - 0,02 \times C20$; $U_{max} = 15,8 \text{ V}$ max 2 h
- Continuous charging (standby): $U = 13,5 - 13,8 \text{ V} / \text{bat}$ at 20°C
- Charging voltages are given at temperature 25°C , otherwise temperature compensation $5\text{mV}/^\circ\text{C}/\text{cell}$

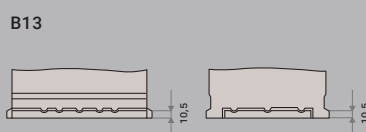
TAB Motion AGM

TAB ID	Short Code	C100 (Ah)	C20 (Ah)	C5 (Ah)	Box Type	Voltage (V)	LxWxH (mm)	BHD	Layout	Terminal	PCS/Pallet (EUR/CNT)	Weight (kg)
1000569	45 AGM	65	60	45	L2	12	242x175x190	B13	0	1	63/90	17.6
1000570	55 AGM	75	70	55	L3	12	278x175x190	B13	0	1	51/80	20.3
1000572	60 AGM	85	80	60	L4	12	315x175x190	B13	0	1	42/60	23.0
1000574	70 AGM	100	95	70	L5	12	353x175x190	B13	0	1	36/60	25.8
1000577	90 AGM	115	105	90	L6	12	394x175x190	B13	0	1	36/60	28.6

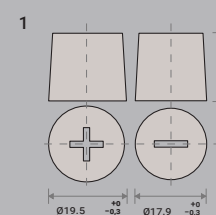
LAYOUT



BHD



TERMINALS



APPLICATIONS



Power That Lasts. Performance You Can Trust.

TAB Motion AGM

Number of cycles: 400 (IEC / EN 60254-1)



TAB Motion Gel

POWER THAT LASTS. THE ULTIMATE MAINTENANCE-FREE BATTERY SOLUTION.

The TAB Motion Gel is a VRLA (Valve Regulated Lead Acid) battery designed for maximum durability and efficiency. Built with gravity-casted positive pasted plates and an electrolyte is immobilized in the Gel form, this battery ensures exceptional reliability, zero maintenance, and superior resistance to extreme conditions. Its reinforced polypropylene (PP) casing adds extra protection, making it the ideal all-rounder for various demanding applications.

Main Features:

- **Completely Maintenance-Free.**
Install and forget!
- **Electrolyte immobilized in Gel form** – preventing stratification and ensuring spill-proof.
- **Ultra-Low Self-Discharge (<2% per month).**
Easier storage & transport.
- **Zero Corrosive Exhaust.**
Safe for the food & pharmaceutical industries.
- **Rugged & Vibration Resistant.**
Built to handle tough conditions.



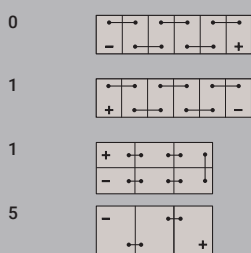
Charging:

- Chargers with IUUa and IUa charging characteristic
- Cyclic application (2,30 – 2,35)V/Cell, maximum current $I_c = 30\% C_5$ (e.g. $C_5 = 105Ah$, $I_c = 31,5A$)
- Equalising charge 2,70V/Cell, $t \leq 4h$, maximum current $I_e = 10\% I_c$ (e.g. $I_c = 31,5A$, $I_e = 3,15A$)
- Stationary application (2,25 – 2,30)V/Cell, maximum current $I_c = 30\% C_5$ (e.g. $C_5 = 105Ah$, $I_c = 31,5A$)
- Charging voltages are given at temperature 25°C, otherwise temperature compensation 5mV/°C/cell

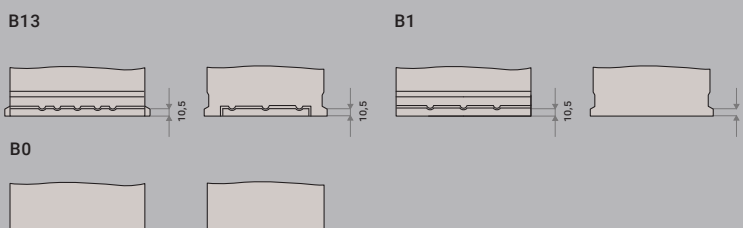
TAB Motion Gel

TAB ID	Short Code	C100 (Ah)	C20 (Ah)	C5 (Ah)	Box Type	Voltage (V)	LxWxH (mm)	BHD	Layout	Terminal	PCS/Pallet (EUR/CNT)	Weight (kg)
1000807	50 Gel	70	60	50	L3	12	278x175x190	B13	0	1	51/80	20.5
1000808	70 Gel	90	80	70	L5	12	353x175x190	B13	0	1	36/60	25.1
1029094	75 Gel	100	85	75	60528	12	352x175x211/232	B1	1	1	36/48	28.9
1000810	105 Gel	140	125	105	62512	12	342x169x265/286	B0	0	1	24/36	37.9
1000811	130 Gel	165	150	130	B	12	513x223x194/216	B0	3	1	21/35	50.1
1000813	180 Gel	235	210	180	C	12	518x273x214/235	B0	3	1	18/24	68.5
1000812	180 Golf Cart Gel	235	210	180	Golf Cart	6	244x190x255/276	B0	5	1	36/48	30.9

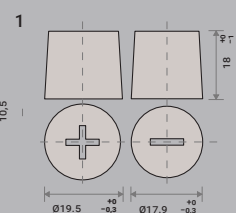
LAYOUT



BHD



TERMINALS



APPLICATIONS



The Ultimate Maintenance-free Battery Solution.

TAB Motion Gel

Number of cycles: 700 (IEC 60254-1)

APPLICATIONS



Motorhome



Caravan



Mobile Home



Truck



Motor Boat



Battery driven Cart



Electric Wheelchair



Cleaning Machine



Photovoltaic System



Mobile Elevating Work Platforms



Alarm System



Uninterruptible Power System

TAB Motion batteries, available in both flooded and VRLA technologies, are designed to meet the demands of various small traction and leisure applications. The range includes block batteries engineered for durability and high performance.

TAB Motion Pasted and TAB Motion Tubular utilize flooded technology, requiring regular maintenance, while TAB Motion AGM and TAB Motion Gel feature advanced gas recombination technology, making them completely maintenance-free. All models offer exceptional cyclic durability, ensuring long-lasting performance.

OPERATION & MAINTENANCE GUIDELINES

TO ENSURE OPTIMAL BATTERY PERFORMANCE AND LONGEVITY, FOLLOW THESE KEY GUIDELINES:

- **Avoid Deep Discharges.**
Prevent excessive depletion to extend battery life.
- **Never Leave the Battery Discharged.**
Always recharge promptly.
- **FLOODED BATTERIES:**
Regularly check the electrolyte level and refill with demineralized water as needed. Some models support a single-point automatic watering system for easier maintenance.
- **VRLA BATTERIES (AGM & GEL):**
These sealed, maintenance-free batteries require no watering, as their electrolyte is permanently absorbed (AGM) or immobilized in Gel.

BY FOLLOWING THESE SIMPLE STEPS, YOU CAN MAXIMIZE THE PERFORMANCE, RELIABILITY, AND LIFESPAN OF YOUR TAB MOTION BATTERY.

POWERING THE FUTURE, TOGETHER.



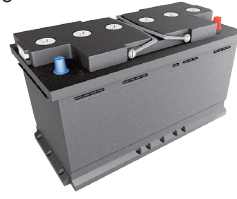
L2 (P)
242×175×190
B13



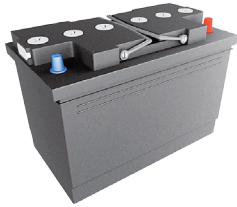
L3 (P/T)
278×175×190
B13



L5 (P)
353×175×190
B13



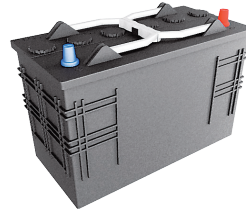
59518 (P)
312×175×212
B0



59518 (T)
303×175×208/229
B1



60528 (P/T)
344×172×212/234
B0



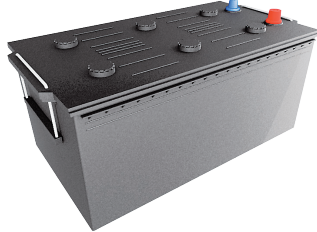
62512 (P/T)
344×172×212/234
B0



B (P/T)
512×223×194/216
B0



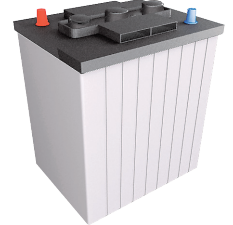
C (P)
518×273×214/235
B0



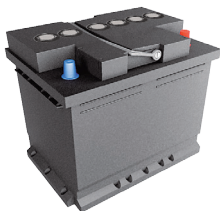
MAC110 (P)
509×175×182/202
B0



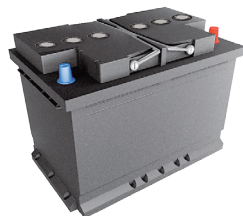
GOLF (T)
244×190×273/284
B0



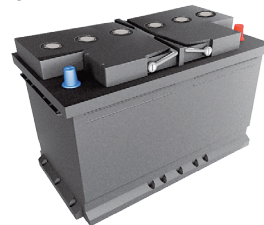
L2 AGM
242×175×190
B13



L3 AGM
278×175×190
B13



L4 AGM
315×175×190
B13



L5 AGM
353×175×190
B13



L6 AGM
394×175×190
B13



BOX TYPES
P = PASTED
T = TUBULAR

BCI 902
311×181×336/361
B0



BCI 903
311×181×386/411
B0



GC2
264×183×245/268
B0



GC8
264×183×245/268
B0



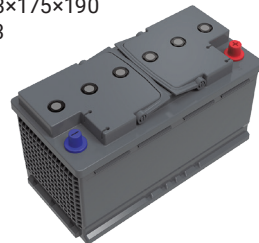
GC12
332×183×248/277
B0



L3 Gel
278×175×190
B13



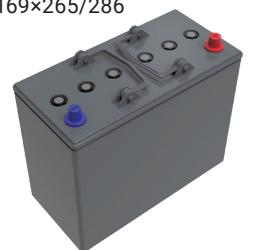
L5 Gel
353×175×190
B13



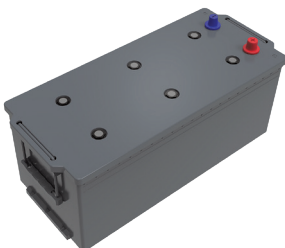
60528 Gel
352×175×211/232
B1



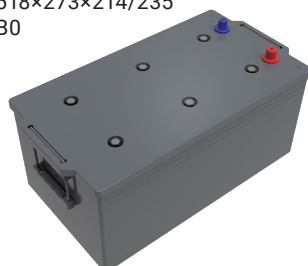
62512 Gel
342×169×265/286
B0



B Gel
513×223×194/216
B0

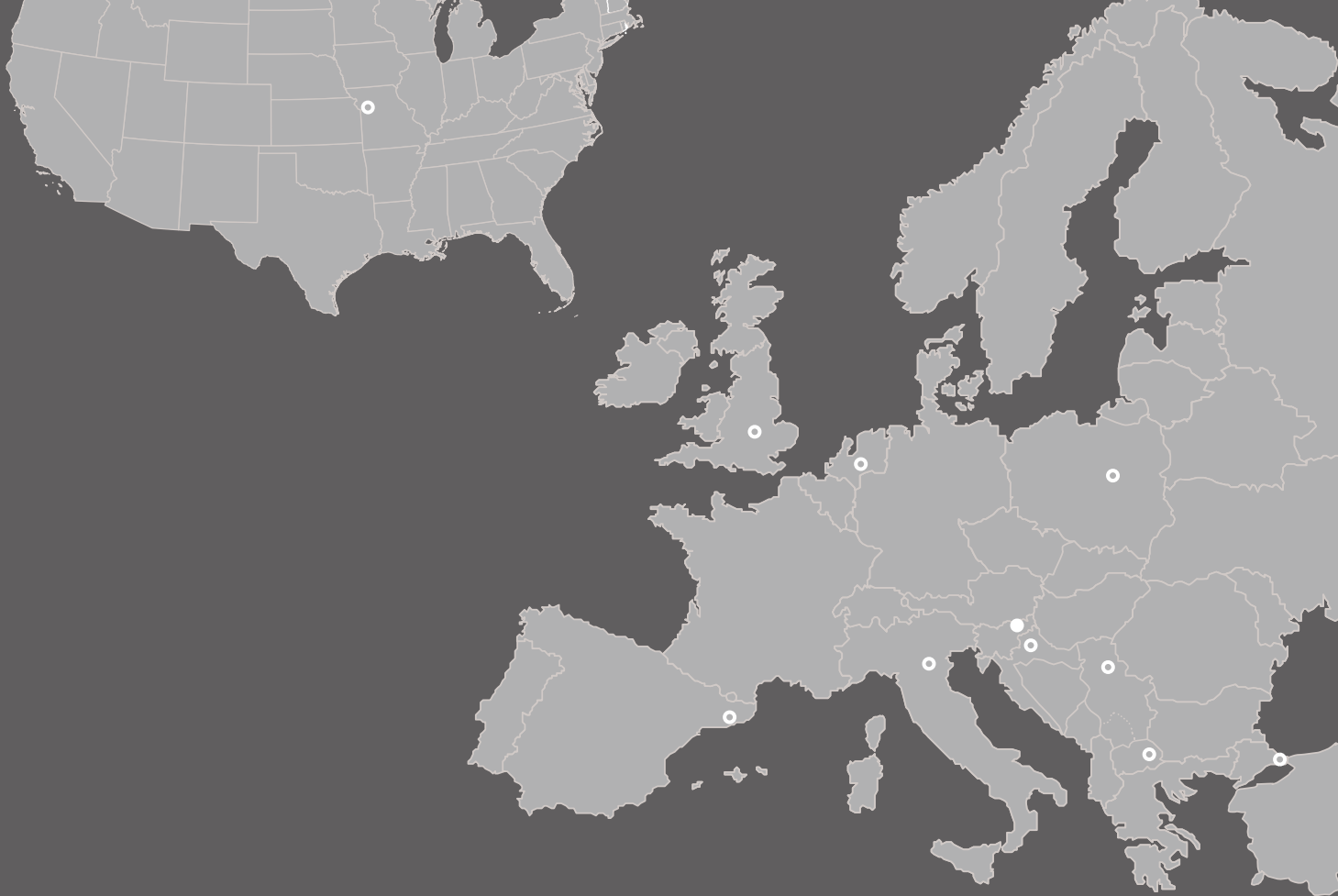


C Gel
518×273×214/235
B0



GOLF Gel
244×190×255/276
B0





TAB d.d.
POLENA 6
SI-2392 MEŽICA
SLOVENIA
e: info@tab.si
w: www.tab.si
t: +386 2 87 02 300
f: +386 2 87 02 305

TAB MAK DOOEL Probishtip
MAKEDONSKI REVOLUCIONERI 50
2210 PROBISHTIP
NORTH MACEDONIA
e: info@tab-mak.mk
w: www.tab-mak.mk
t: +389 3 24 81 501

TAB ITALIA S.P.A.
VIA XXV APRILE 1945, N. 8
24050 ZANICA (BG)
ITALY
e: info@tabitalia.com
w: www.tabitalia.com
t: +39 0363 60528

TAB POLSKA Sp. z o.o.
UL. PRZEMYSŁOWA 5
05 082 BLIZNE ŁASZCZYŃSKIEGO
POLAND
e: buiro@tab-polska.pl
w: www.tab-polska.pl
t: +48 22 487 50 70

TAB SPAIN S.L.
CALLE LLOBATERES 28, P.I. SANTIGA
08210 BARBERA DEL VALLES
BARCELONA
SPAIN
e: info@tabspain.com
w: www.tabspain.com
t: +34 910 880 066

TAB BATERIJE d.o.o.
ZEMUNSKA 301
11277 UGRINOVCI
SERBIA
e: office@tabbaterije.rs
w: www.tabbaterije.rs
t: +381 11 377 4452

BATERIJA-TAB HRVATSKA d.o.o.
DUGOSELSKA 102
1360 SESVETE
CROATIA
e: ured@baterija.hr
w: www.baterija.hr
t: +385 1 233 9 233

TAB BAYKAL AKÜMÜLATÖR SANAYİ
VE TİCARET LTD. ŞTİ ESENTEPE,
2950. SK. NO:1 BLOK 7/A
34265 SULTANGAZI / İSTANBUL
TURKEY
e: info@tab-baykal.com
w: www.tab-baykal.com
t: +90 212 417 52 43

TAB BENELUX B.V.
BELLSTRAAT 18,
6716 BA, EDE
THE NETHERLANDS
e: info@tab-benelux.com
w: www.tab-benelux.com
t: +31 318 69 00 88

ENERGY IN MOTION

TAB BATTERY UK LIMITED
PEGASUS HOUSE, RIVERSIDE END
MARKET HARBOROUGH,
LEICESTERSHIRE
LE16 7PU
UNITED KINGDOM
e: info@tabbatteryuk.com
w: www.tabbatteryuk.com
t: +44 18 58 433 008

TAB USA, LLC
1501 SHEPHERD ROAD
SUITE 105 LIBERTY
MO 64068
USA
e: admin@tab-usa.com
w: www.tab-usa.com
t: +1 816 298 0101



TAB d.d.
POLENA 6
SI-2392 MEŽICA
SLOVENIA